

## Data Sources for This Report

### CoC: OH-501 Toledo/Lucas County CoC

The CoC Profile includes data from Point-in-Time (PIT) Count, Housing Inventory Count (HIC), Annual Homeless Assessment Report (AHAR), and Homelessness Pulse report data entered into HUD's Homelessness Data Exchange (HDX). The data in this report is limited to data that has been finalized and determined to be useable. For each report type, all data sets that have been entered into the HDX are listed below, along with information that identifies whether or not the data is included in this report. Some fluctuations in numbers may be attributable to data that was excluded.

For CoCs which have merged, this report will only include data submitted under the current active CoC name and number. Data profile reports from merged CoCs may show significant increases in beds, units, and people, since only the data from the active CoC is being posted to the report.

### Point-in-Time (PIT) Data

Limited to PIT data with a reporting status of 'Confirmed' dated 1/1/2009 or later. All 2009 PIT data was imported to the HDX from the final data set submitted to HUD.

Date	Reporting Status	Included in CoC Profile
1/27/2009 12:00:00 AM	confirmed	Yes
1/26/2010 12:00:00 AM	confirmed	Yes
1/26/2011 12:00:00 AM	confirmed	Yes

### Housing Inventory Count (HIC) Data

Includes all HIC data with a reporting status of 'Confirmed'.

Date	Reporting Status	Included in CoC Profile
1/26/2008 12:00:00 AM	confirmed	Yes
1/26/2009 12:00:00 AM	confirmed	Yes
1/26/2010 12:00:00 AM	confirmed	Yes
1/26/2011 12:00:00 AM	confirmed	Yes

### Annual Homeless Assessment Report (AHAR) Data

For CoCs with more than one AHAR site, data has been aggregated across all sites; counts of people who were served in more than one site may be duplicated. Only report sections marked 'Useable' below are included in this report. PSH report sections marked with an asterisk (\*) below were not added to the AHAR until 2010. Only years in which AHAR data were submitted are listed below.

Data Sources for CoC: OH-501 Toledo/Lucas County CoC

AHAR Acronyms

ES = Emergency Shelter

TH = Transitional Housing

PSH = Permanent Supportive Housing

IND = Individuals

FAM = Families

## Greater Toledo

Year	ES-IND	ES-FAM	TH-FAM	TH-IND	PSH-IND	PSH-FAM
2008	Not Useable	Not Useable	Useable	Not Useable	*	*
2009	Useable	Useable	Useable	Useable	*	*
2010	Useable	Useable	Useable	Useable	Useable	Useable
2011	Not Useable	Useable	Useable	Useable	Useable	Useable

## Pulse Data

Includes all Pulse data with a reporting status of 'Confirmed'. Only quarters for which Pulse data were submitted are listed below.

Date	Reporting Status	Included in CoC Profile
------	------------------	-------------------------

Point-in-Time Counts of People Who Are Homeless  
CoC:OH-501 Toledo/Lucas County CoC

01/27/2009

01/26/2010

01/26/2011

**Sheltered People in Households...**

With at Least One Adult and One Child	277	307	269
With Only Children	*	*	0
Without Children	450	549	590
<b>All Sheltered People</b>	<b>727</b>	<b>856</b>	<b>859</b>

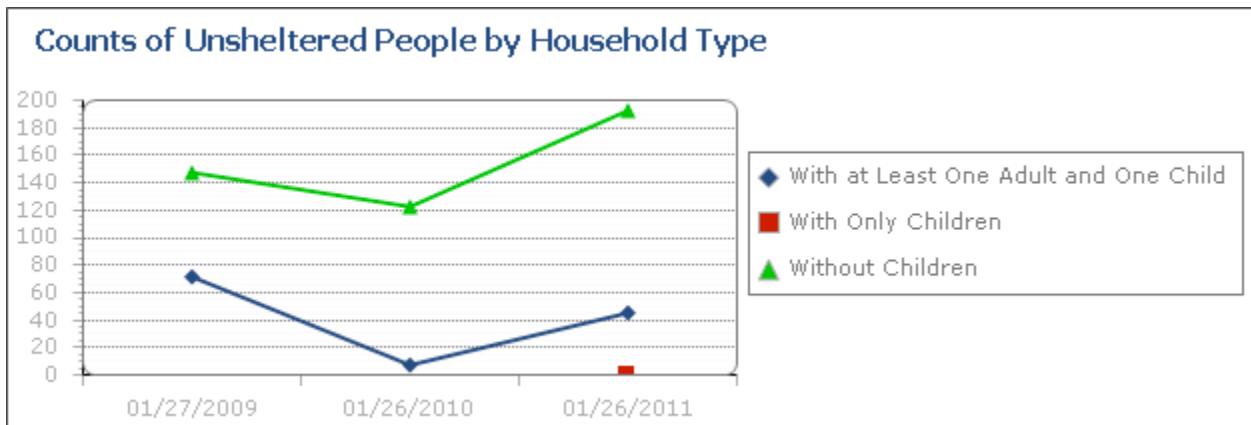
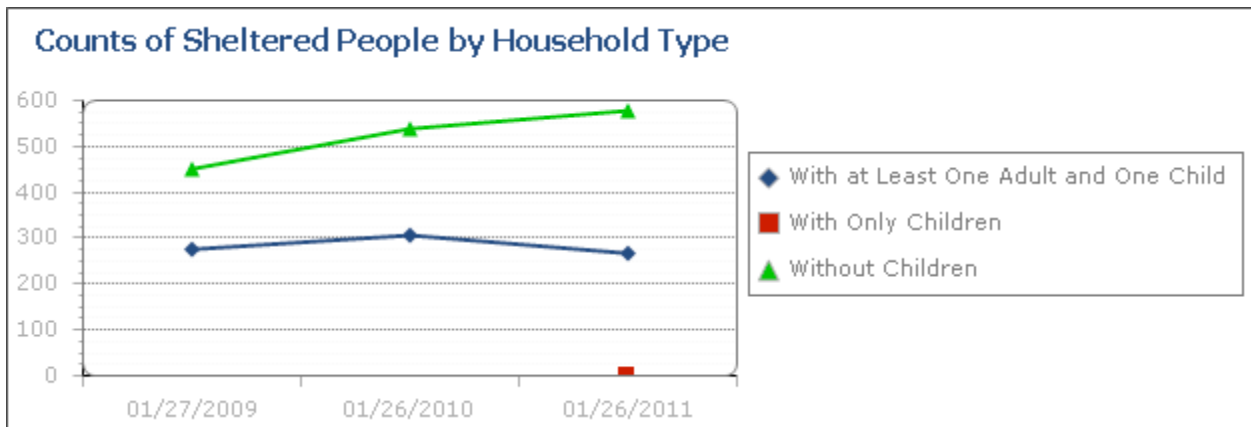
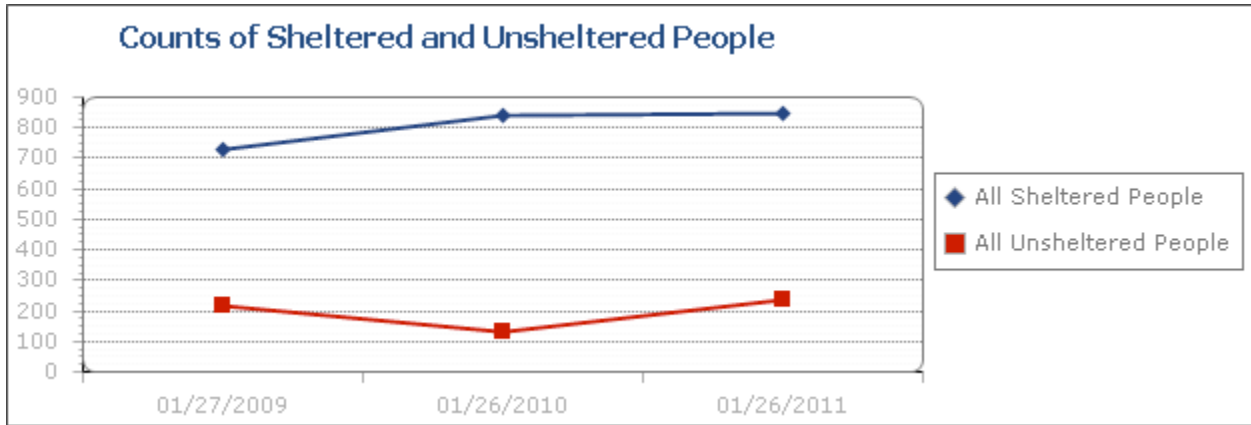
**Unsheltered People in Households...**

With at Least One Adult and One Child	71	7	45
With Only Children	*	*	0
Without Children	147	123	192
<b>All Unsheltered People</b>	<b>218</b>	<b>130</b>	<b>237</b>

**All People in Households...**

With at Least One Adult and One Child	348	314	314
With Only Children	*	*	0
Without Children	597	672	782
<b>All People</b>	<b>945</b>	<b>986</b>	<b>1,096</b>

\*No data entered for this category on this date



**Households without children** - Households with adults (18 or older) only. This includes households composed of unaccompanied adults and multiple adults.

**Households with at least one adult and one child** - Households with at least one adult (18 or older) and one child (under 18).

**Households with only children** - Households composed exclusively of persons under age 18, including unaccompanied children, adolescent parents and their children, adolescent siblings, or other household configurations composed only of children.

**Sheltered** - Sleeping in emergency shelters, transitional housing, and Safe Haven programs on the night designated for the count.

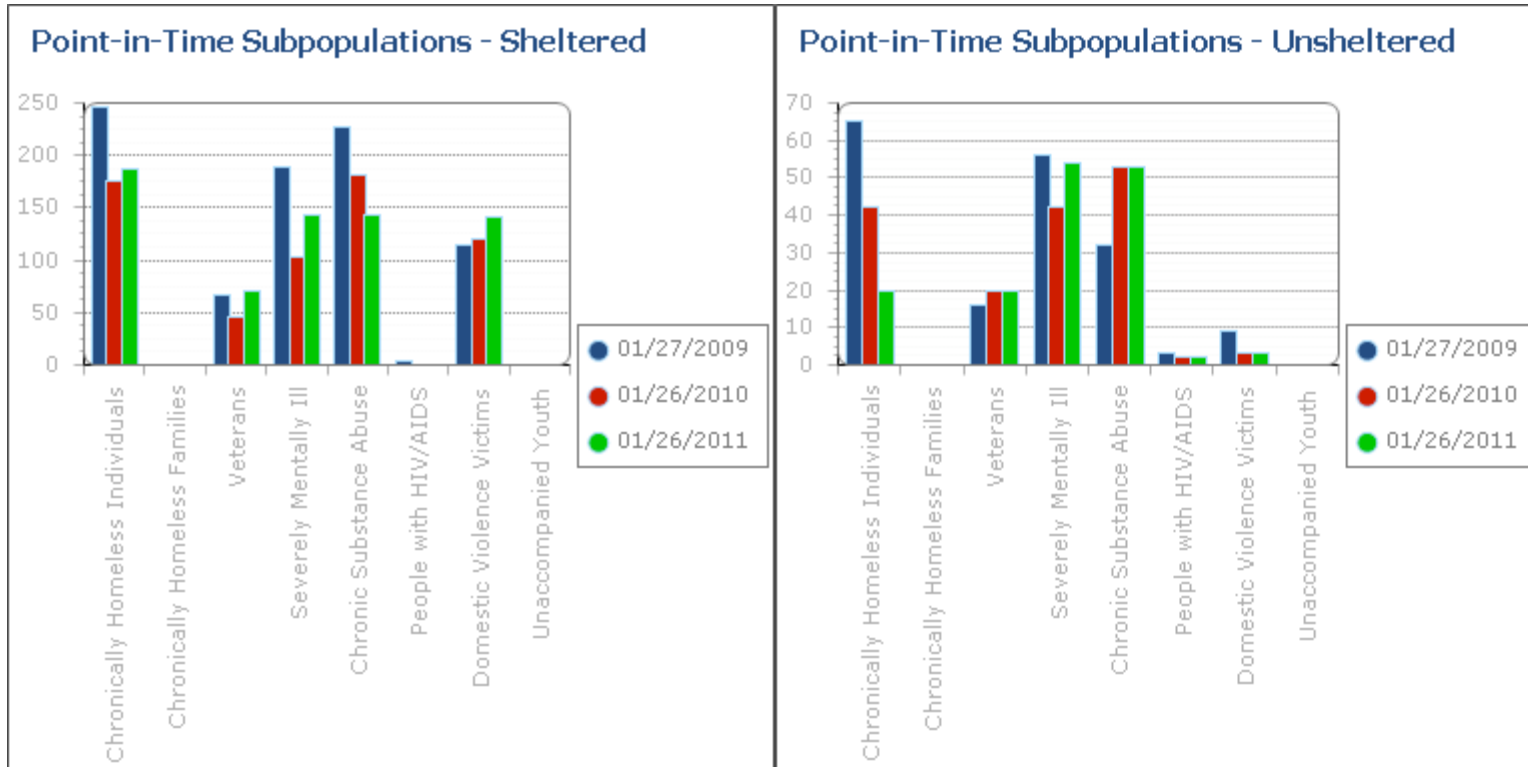
**Unsheltered** - Sleeping in a place not meant for human habitation, such as cars, parks, sidewalks abandoned buildings, or on the street.

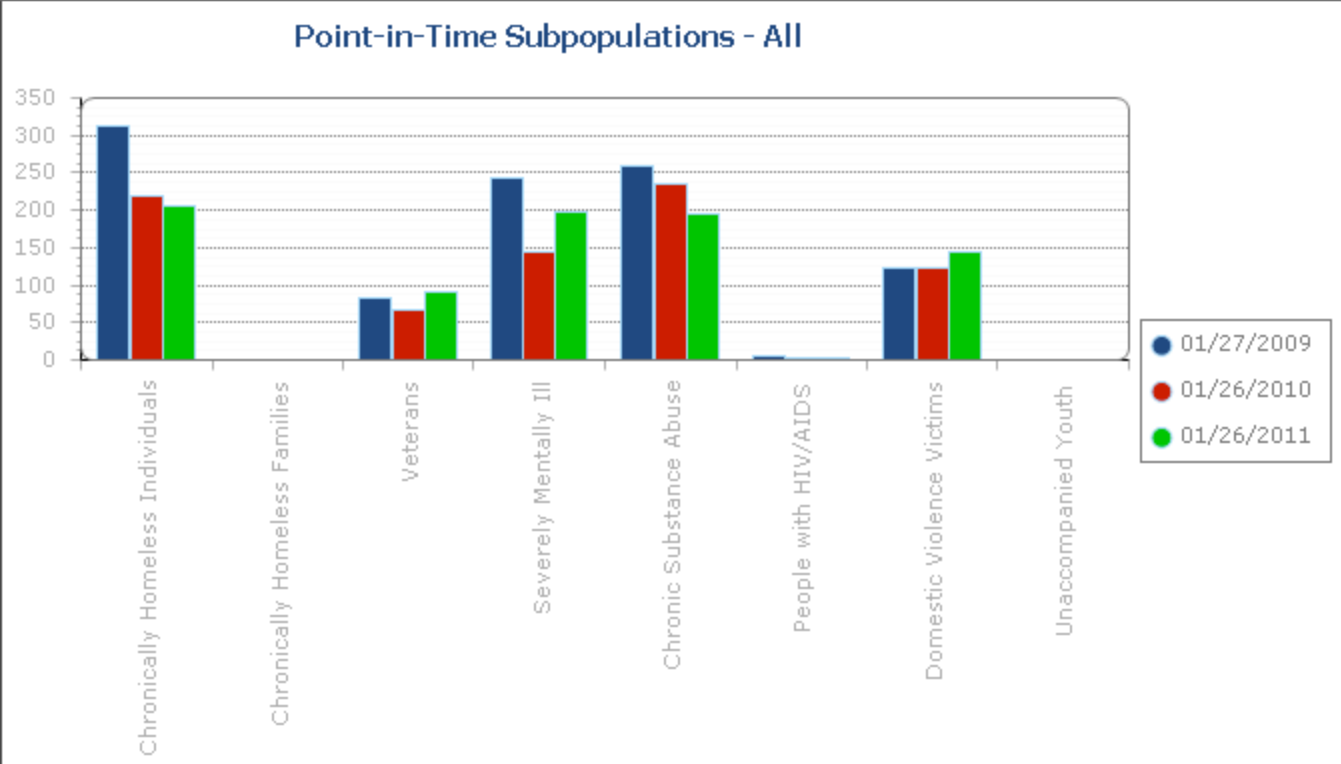
PIT Subpopulations  
CoC:OH-501 Toledo/Lucas County CoC

Population Type	01/27/2009			01/26/2010			01/26/2011		
	Sheltered	Unsheltered	All	Sheltered	Unsheltered	All	Sheltered	Unsheltered	All
Chronically Homeless Individuals	247	65	312	176	42	218	187	20	207
Chronically Homeless Families (total People in household)	*	*	*	*	*	*	0	0	0
Veterans	67	16	83	46	20	66	70	20	90
Severely Mentally Ill †	188	56	244	103	42	145	144	54	198
Chronic Substance Abuse †	227	32	259	181	53	234	143	53	196
People with HIV/AIDS †	3	3	6	0	2	2	0	2	2
Victims of Domestic Violence †	114	9	123	121	3	124	142	3	145
Unaccompanied Child (Under 18) †	0	0	0	0	0	0	0	0	0

\* No data entered for this category on this date

† Optional for unsheltered People.





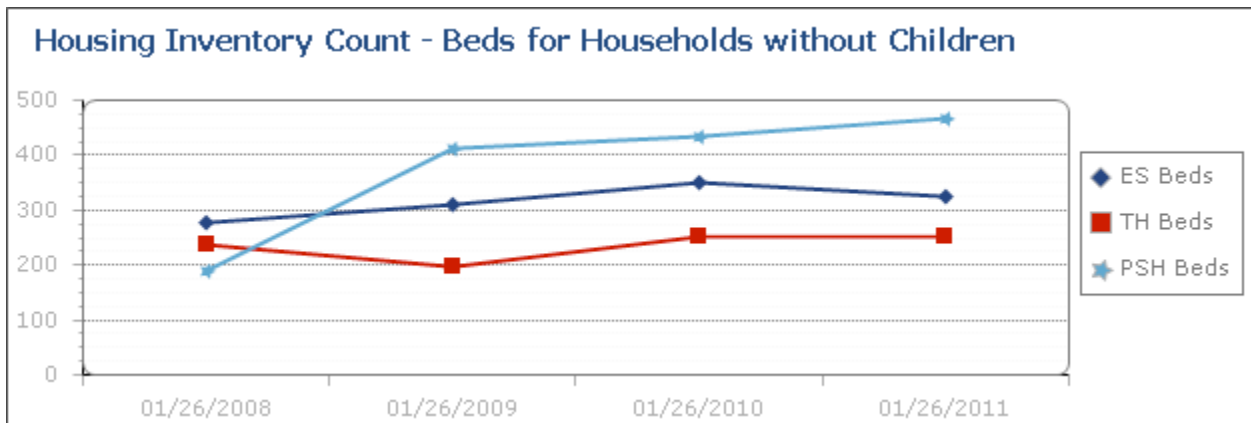
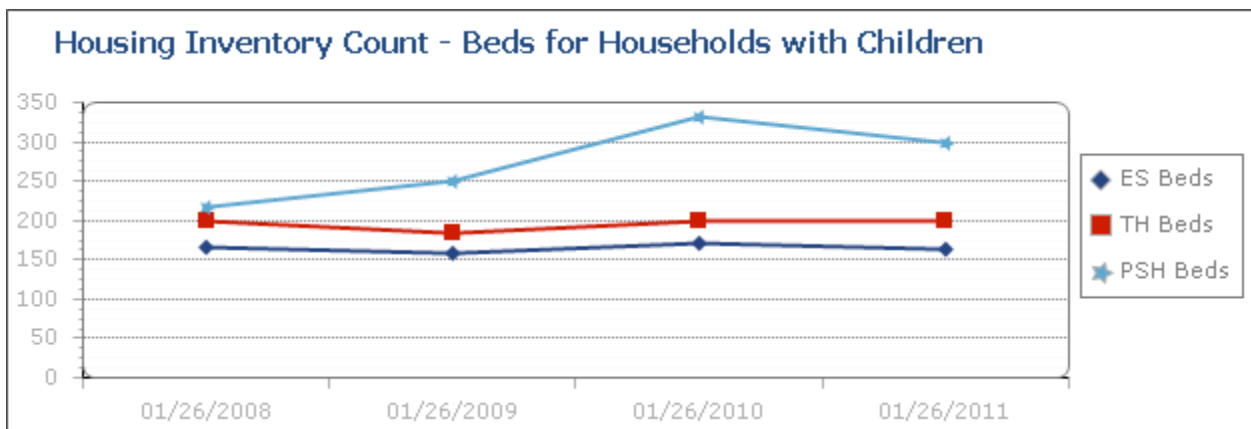
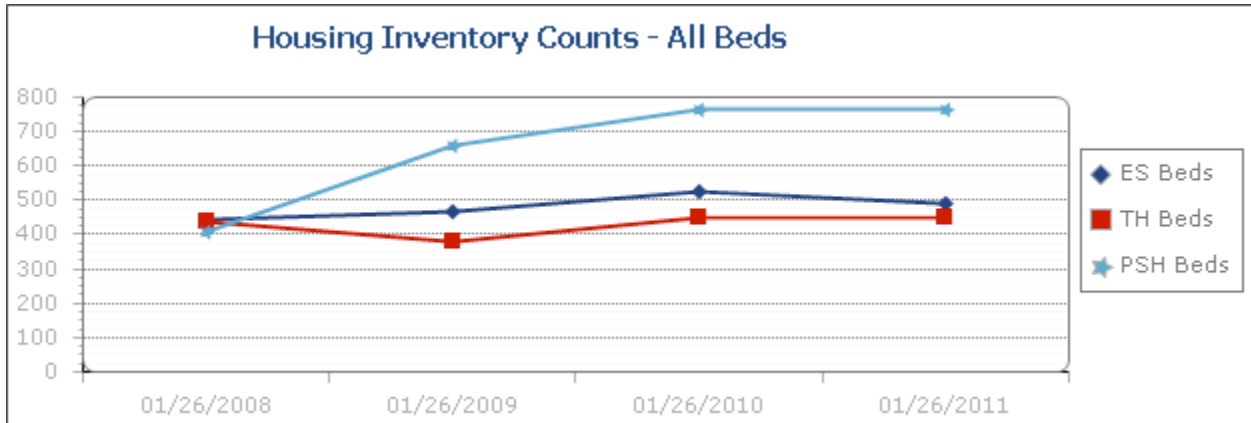
## Housing Inventory Count CoC:OH-501 Toledo/Lucas County CoC

	01/26/2008	01/26/2009	01/26/2010	01/26/2011	change from last year	overall change
<b>Emergency Shelter</b>						
Units, Households with Children	59	62	66	63	-5 %	7 %
Beds, Households with Children	165	158	172	163	-5 %	-1 %
Beds, Households without Children	279	312	351	325	-7 %	16 %
<b>Emergency Shelter Beds</b>	<b>444</b>	<b>470</b>	<b>523</b>	<b>488</b>	<b>-7 %</b>	<b>10 %</b>
<b>Transitional Housing</b>						
Units, Households with Children	70	64	63	63	0 %	-10 %
Beds, Households with Children	200	184	198	198	0 %	-1 %
Beds, Households without Children	236	197	252	252	0 %	7 %
<b>Transitional Housing Beds</b>	<b>436</b>	<b>381</b>	<b>450</b>	<b>450</b>	<b>0 %</b>	<b>3 %</b>
<b>Safe Haven</b>						
Beds, Households without Children	12	12	12	12	0 %	0 %
<b>Safe Haven Beds</b>	<b>12</b>	<b>12</b>	<b>12</b>	<b>12</b>	<b>0 %</b>	<b>0 %</b>
<b>Permanent Supportive Housing</b>						
Units, Households with Children	89	110	149	117	-21 %	31 %
Beds, Households with Children	218	250	332	299	-10 %	37 %
Beds, Households without Children	190	411	433	468	8 %	146 %
<b>Permanent Supportive Housing Beds</b>	<b>408</b>	<b>661</b>	<b>765</b>	<b>767</b>	<b>0 %</b>	<b>88 %</b>
<b>HPRP-Rapid Re-Housing</b>						
Units, Households with Children	*	*	*	1	0 %	0 %
Beds, Households with Children	*	*	*	4	0 %	0 %
Beds, Households without Children	*	*	*	7	0 %	0 %
<b>HPRP-Rapid Re-Housing Beds</b>	<b>*</b>	<b>*</b>	<b>*</b>	<b>11</b>	<b>0 %</b>	<b>0 %</b>

\*No data entered for this category on this date

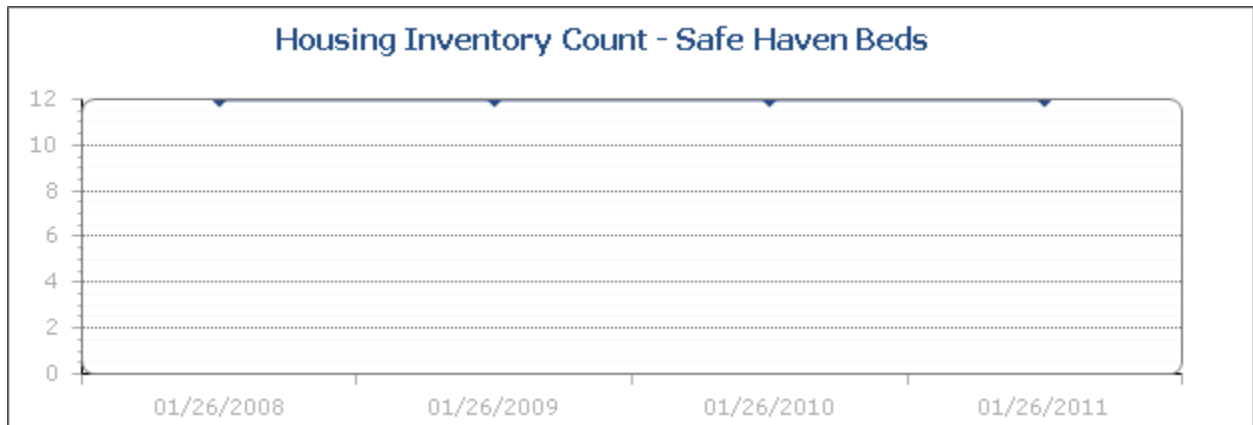


Housing Inventory Count for CoC: OH-501 Toledo/Lucas County CoC



HPRP is a time limited program and these beds are not included in the charts for annual comparison purposes

Housing Inventory Count for CoC: OH-501 Toledo/Lucas County CoC

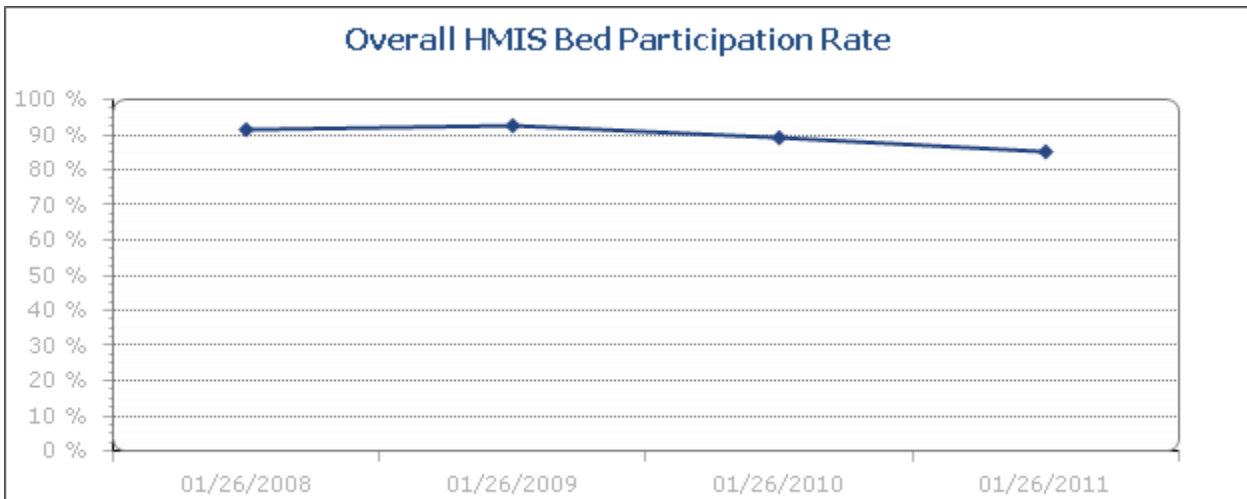


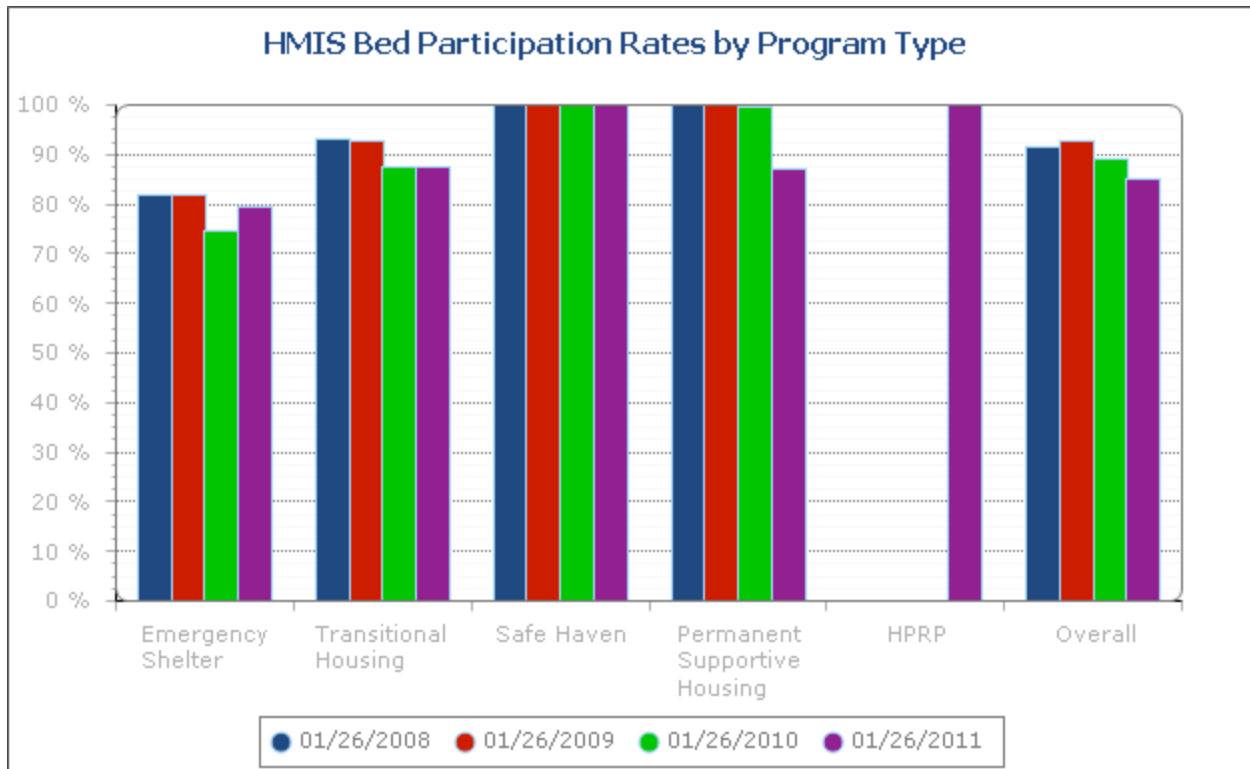
## HIC HMIS Participation Rates CoC:OH-501 Toledo/Lucas County CoC

HMIS participation rates have been corrected and no longer include domestic violence beds in the HMIS bed participation rate.

	01/26/2008	01/26/2009	01/26/2010	01/26/2011
Emergency Shelter	82 %	82 %	75 %	80 %
Transitional Housing	93 %	93 %	88 %	88 %
Safe Haven	100 %	100 %	100 %	100 %
Permanent Supportive Housing	100 %	100 %	100 %	87 %
HPRP	*	*	*	100 %
<b>Overall</b>	<b>92 %</b>	<b>93 %</b>	<b>89 %</b>	<b>85 %</b>

HMIS participation rates are based on year-round beds and do not include seasonal or overflow beds.





## AHAR Counts

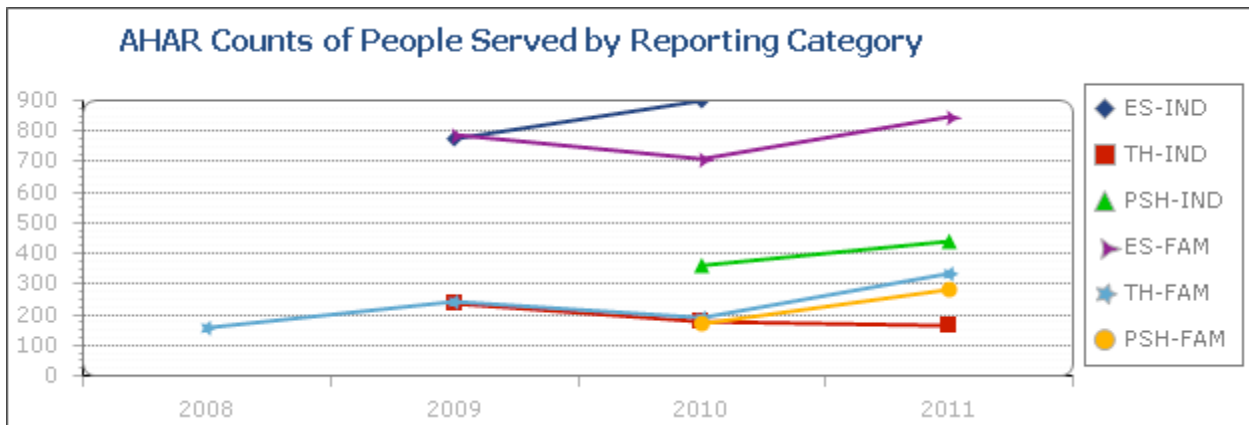
CoC: OH-501 Toledo/Lucas County CoC

### AHAR Counts of People Served by Reporting Category

Reporting Category	2008	2009	2010†	2011
Individuals in Emergency Shelter	*	776	897	*
Individuals in Transitional Housing	*	235	175	163
Individuals in Permanent Supportive Housing	*	*	362	443
Families in Emergency Shelter	*	791	709	847
Families in Transitional Housing	160	240	190	337
Families in Permanent Supportive Housing	*	*	173	285

† First year PSH data included in AHAR.

\*No data entered for this year or status is not Confirmed and Usable.

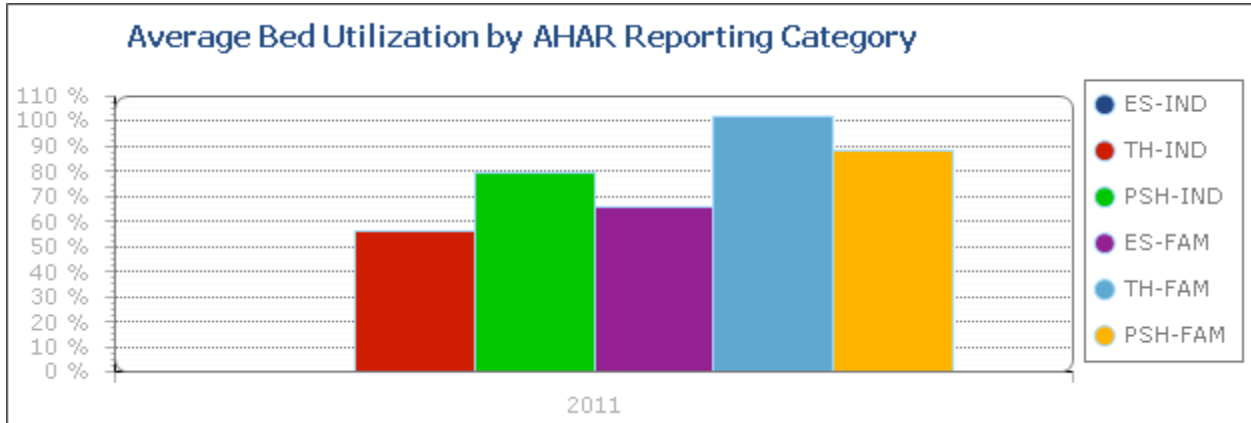


### Average Bed Utilization by AHAR Reporting Category

Reporting Category	2008	2009	2010†	2011
Individuals in Emergency Shelter	*	92 %	163 %	*
Individuals in Transitional Housing	*	83 %	46 %	56 %
Individuals in Permanent Supportive Housing	*	*	65 %	80 %
Families in Emergency Shelter	*	78 %	50 %	66 %
Families in Transitional Housing	69 %	87 %	76 %	102 %
Families in Permanent Supportive Housing	*	*	45 %	89 %

† First year PSH data included in AHAR.

\*No data entered for this year or status is not Confirmed and Usable.

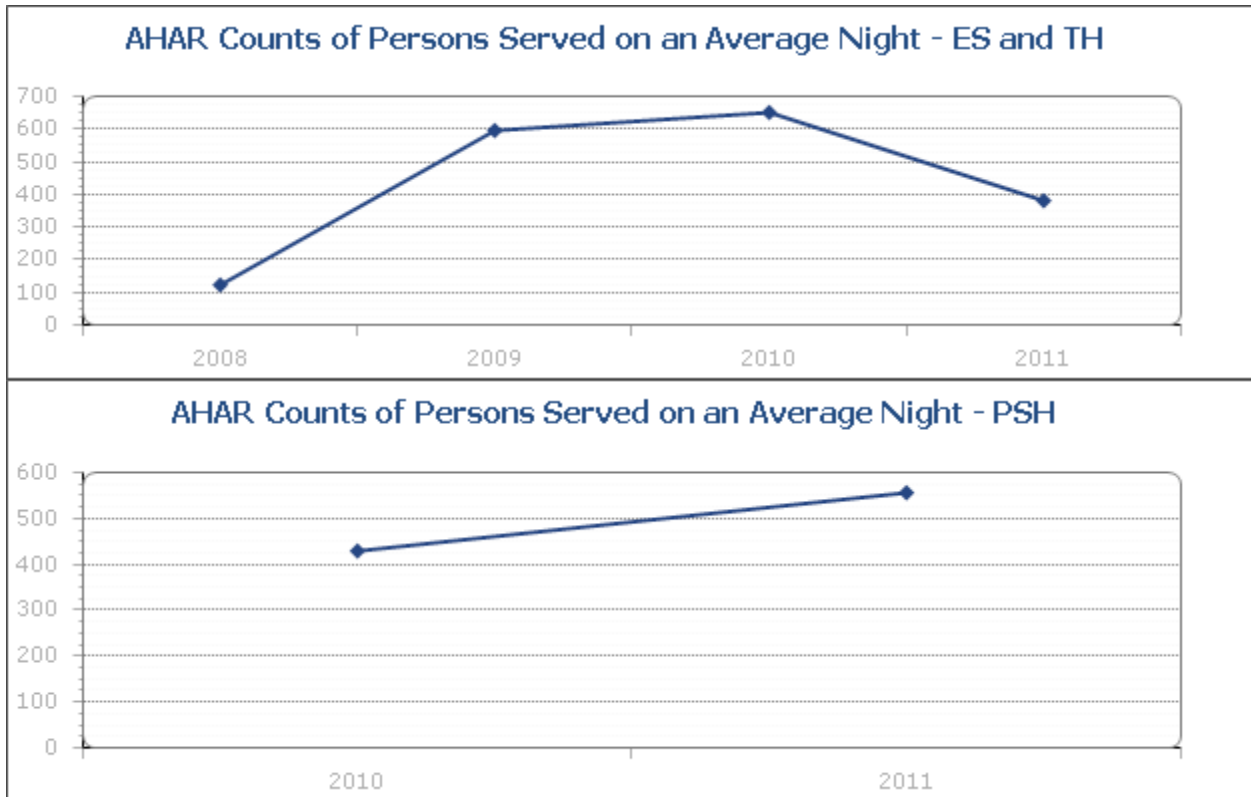


### AHAR Counts of People Served on an Average Night

Reporting Category	2008	2009	2010†	2011
Individuals in Emergency Shelter	*	209	361	*
Individuals in Transitional Housing	*	139	92	113
Individuals in Permanent Supportive Housing	*	*	282	338
Families in Emergency Shelter	*	105	75	99
Families in Transitional Housing	121	143	125	167
Families in Permanent Supportive Housing	*	*	147	217
<b>Total</b>	<b>121</b>	<b>596</b>	<b>1,082</b>	<b>934</b>

† First year PSH data included in AHAR.

\*No data entered for this year or status is not Confirmed and Usable.



Annual Homeless Assessment Report Counts for CoC: OH-501 Toledo/Lucas County CoC



## AHAR Living Situation Prior to Program Entry CoC: OH-501 Toledo/Lucas County CoC

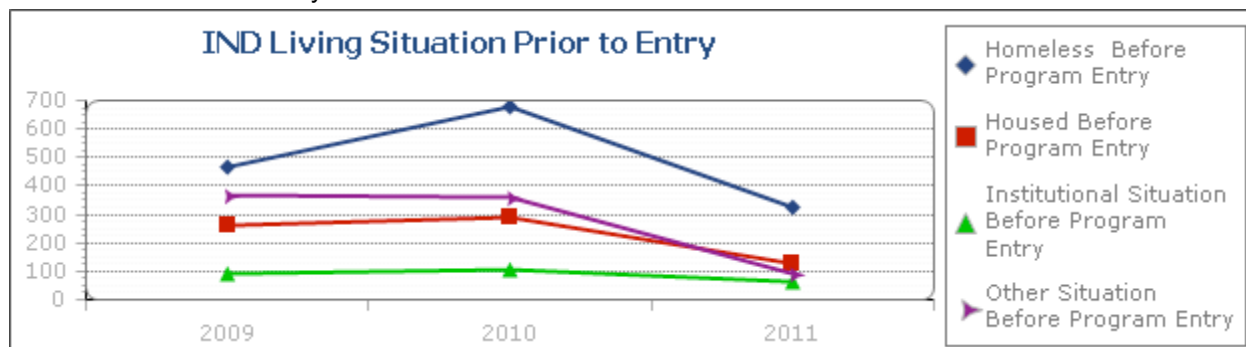
### Individuals Living Situation Prior to Program Entry

This table includes data about living situation prior to program entry (where persons spent last night) as reported in the AHAR for individuals in emergency shelter, transitional housing and permanent supportive housing. Individuals included in this table are people in households comprised of only adults or only persons age 17 or under, including unaccompanied children, adolescent parents and their children, adolescent siblings, or other household configurations composed only of children.

Living Situation	2009	2010†	2011
Place not meant for habitation	22	47	47
Emergency Shelter, Safe Haven, or Transitional Housing	442	631	279
<b>Homeless Before Program Entry</b>	<b>464</b>	<b>678</b>	<b>326</b>
Staying with family/friends	204	234	108
Rented/owned	56	54	17
<b>Housed Before Program Entry</b>	<b>260</b>	<b>288</b>	<b>125</b>
Psychiatric facility, substance abuse center, or hospital	53	68	47
Jail, prison, or juvenile detention	37	34	13
Foster care home	4	7	6
<b>Institutional Situation Before Program Entry</b>	<b>94</b>	<b>109</b>	<b>66</b>
Hotel or motel with no voucher	4	6	3
Other	80	80	40
Information missing	282	273	46
<b>Other Situation Before Program Entry</b>	<b>366</b>	<b>359</b>	<b>89</b>

†First year PSH data included in AHAR.

\*No data entered for this year or status is not Confirmed and Usable.



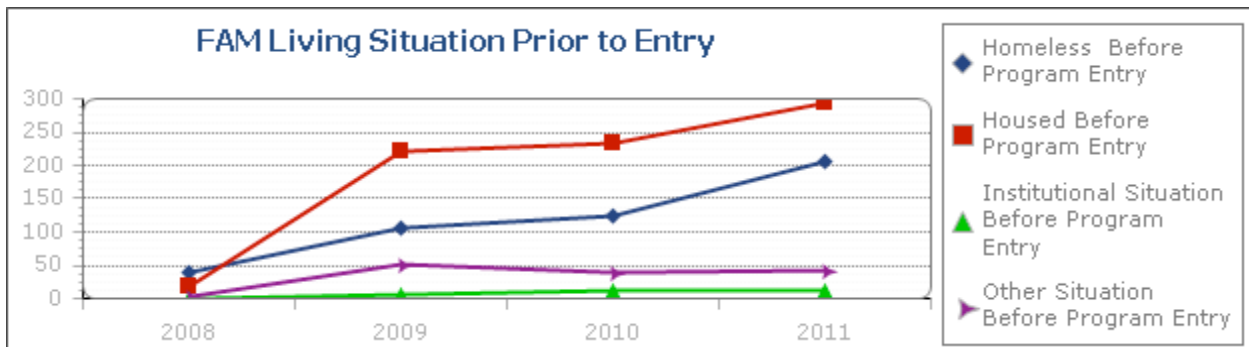
### Family Living Situation Prior to Program Entry

This table includes data about living situation prior to program entry (where persons spent last night) as reported in the AHAR for families in emergency shelter, transitional housing and permanent supportive housing. People included in this table are persons in households with at least one adult and one child.

Living Situation	2008	2009	2010†	2011
Place not meant for habitation	0	3	4	8
Emergency Shelter, Safe Haven, or Transitional Housing	39	103	120	199
<b>Homeless Before Program Entry</b>	<b>39</b>	<b>106</b>	<b>124</b>	<b>207</b>
Staying with family/friends	4	115	142	205
Rented/owned	13	107	91	90
<b>Housed Before Program Entry</b>	<b>17</b>	<b>222</b>	<b>233</b>	<b>295</b>
Psychiatric facility, substance abuse center, or hospital	1	3	7	10
Jail, prison, or juvenile detention	0	4	4	1
Foster care home	0	0	1	1
<b>Institutional Situation Before Program Entry</b>	<b>1</b>	<b>7</b>	<b>12</b>	<b>12</b>
Hotel or motel with no voucher	1	3	6	9
Other	3	29	15	23
Information missing	0	21	19	9
<b>Other Situation Before Program Entry</b>	<b>4</b>	<b>53</b>	<b>40</b>	<b>41</b>

†First year PSH data included in AHAR.

\*No data entered for this year or status is not Confirmed and Usable.



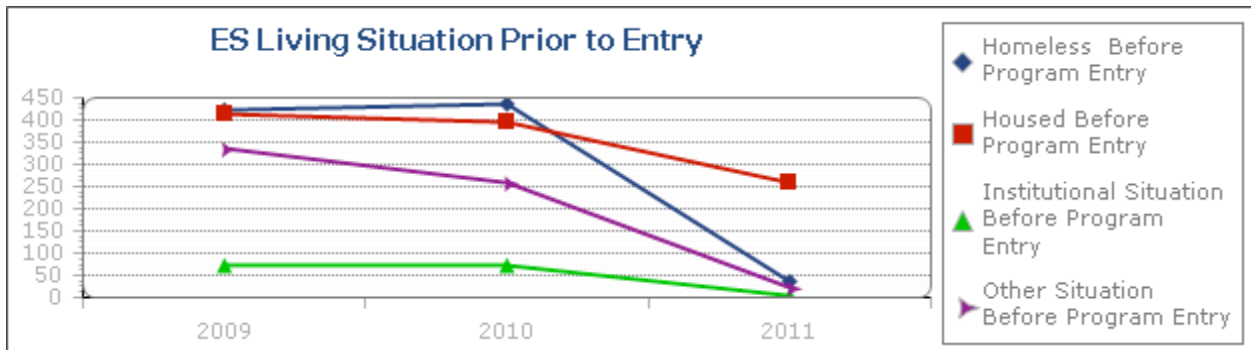
### Living Situation Prior to Program Entry for People Staying in Emergency Shelter

This table includes data about where people were staying the night prior to program entry for all persons served in emergency shelter during the AHAR reporting period. Data is reported for both individuals and families.

Living Situation	2009	2010†	2011
Place not meant for habitation	17	13	*
Emergency Shelter, Safe Haven, or Transitional Housing	405	425	37
<b>Homeless Before Program Entry</b>	<b>422</b>	<b>438</b>	<b>37</b>
Staying with family/friends	273	275	177
Rented/owned	140	120	80
<b>Housed Before Program Entry</b>	<b>413</b>	<b>395</b>	<b>257</b>
Psychiatric facility, substance abuse center, or hospital	36	43	3
Jail, prison, or juvenile detention	33	26	0
Foster care home	3	4	*
<b>Institutional Situation Before Program Entry</b>	<b>72</b>	<b>73</b>	<b>3</b>
Hotel or motel with no voucher	6	7	7
Other	93	57	15
Information missing	237	194	2
<b>Other Situation Before Program Entry</b>	<b>336</b>	<b>258</b>	<b>24</b>

†First year PSH data included in AHAR.

\*No data entered for this year or status is not Confirmed and Usable.



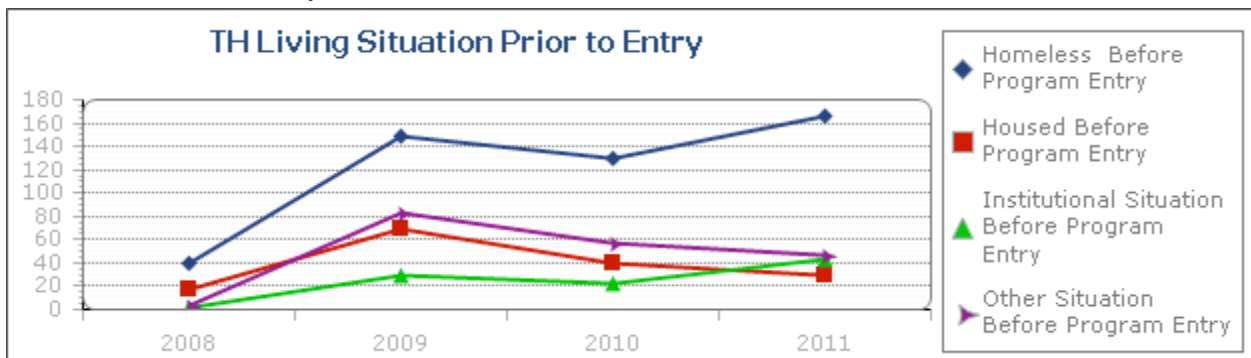
### Living Situation Prior to Program Entry for People Living in Temporary Housing

This table includes data about where people were staying the night prior to program entry for all persons served in temporary housing during the AHAR reporting period. Data is reported for both individuals and families.

Living Situation	2008	2009	2010†	2011
Place not meant for habitation	0	8	2	3
Emergency Shelter, Safe Haven, or Transitional Housing	39	140	127	163
<b>Homeless Before Program Entry</b>	<b>39</b>	<b>148</b>	<b>129</b>	<b>166</b>
Staying with family/friends	4	46	30	26
Rented/owned	13	23	10	3
<b>Housed Before Program Entry</b>	<b>17</b>	<b>69</b>	<b>40</b>	<b>29</b>
Psychiatric facility, substance abuse center, or hospital	1	20	19	37
Jail, prison, or juvenile detention	0	8	3	7
Foster care home	0	1	0	0
<b>Institutional Situation Before Program Entry</b>	<b>1</b>	<b>29</b>	<b>22</b>	<b>44</b>
Hotel or motel with no voucher	1	1	1	1
Other	3	16	13	11
Information missing	0	66	43	34
<b>Other Situation Before Program Entry</b>	<b>4</b>	<b>83</b>	<b>57</b>	<b>46</b>

†First year PSH data included in AHAR.

\*No data entered for this year or status is not Confirmed and Usable.



AHAR Living Situation Prior to Program Entry for CoC: OH-501 Toledo/Lucas County CoC

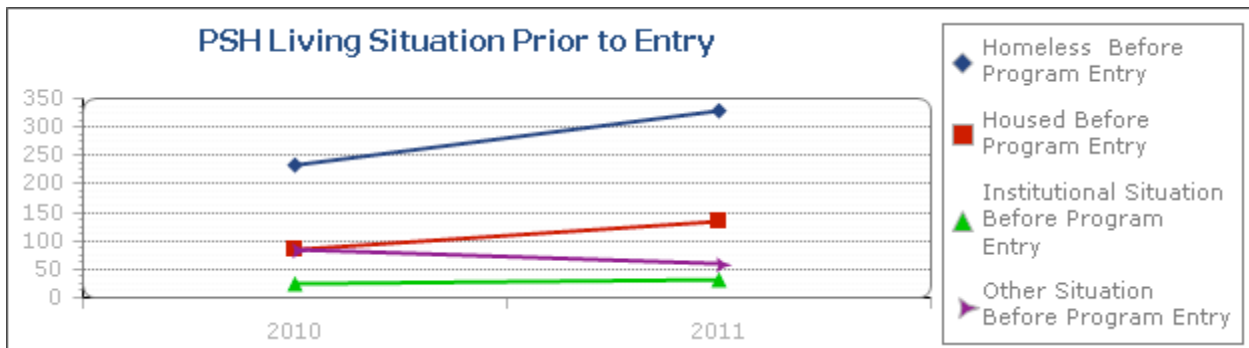
Living Situation Prior to Program Entry for People Living in Permanent Supportive Housing

This table includes data about where people were staying the night prior to program entry for all persons served in permanent supportive housing during the AHAR reporting period. Data is reported for both individuals and families.

Living Situation	2010†	2011
Place not meant for habitation	36	52
Emergency Shelter, Safe Haven, or Transitional Housing	199	278
<b>Homeless Before Program Entry</b>	<b>235</b>	<b>330</b>
Staying with family/friends	71	110
Rented/owned	15	24
<b>Housed Before Program Entry</b>	<b>86</b>	<b>134</b>
Psychiatric facility, substance abuse center, or hospital	13	17
Jail, prison, or juvenile detention	9	7
Foster care home	4	7
<b>Institutional Situation Before Program Entry</b>	<b>26</b>	<b>31</b>
Hotel or motel with no voucher	4	4
Other	25	37
Information missing	55	19
<b>Other Situation Before Program Entry</b>	<b>84</b>	<b>60</b>

†First year PSH data included in AHAR.

\*No data entered for this year or status is not Confirmed and Usable.



## AHAR PSH Destination CoC: OH-501 Toledo/Lucas County CoC

### Exit Destination for Families in Permanent Supportive Housing

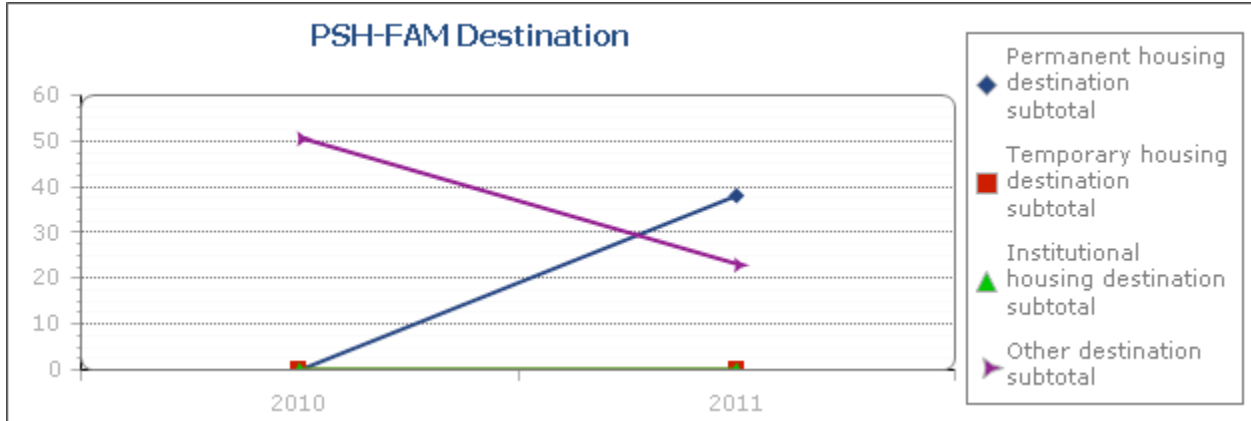
This table includes data about housing destinations of people in households with at least one adult and one child who exited permanent supportive housing during the AHAR reporting period. Note that prior to 2011, There was no distinction between staying with family/friends permanently or temporarily. All family/friends destinations prior to 2011 are grouped in the temporary category.

Destination	2010	2011
Permanent supportive housing	0	0
Rental by client	0	36
Staying with family/friends (permanent)	*	2
Owned by client	0	0
<b>Permanent housing destination subtotal</b>	<b>0</b>	<b>38</b>
Emergency shelter	0	0
Transitional housing	0	0
Staying with family/friends (temporary)	0	0
Place not meant for habitation	0	0
Safe Haven	*	0
Hotel or motel (no voucher)	0	0
<b>Temporary housing destination subtotal</b>	<b>0</b>	<b>0</b>
Psychiatric facility	0	0
Substance abuse treatment or detox	0	0
Hospital (non-psychiatric)	0	0
Jail, prison, or juvenile detention	0	0
Foster care home	0	0
<b>Institutional housing destination subtotal</b>	<b>0</b>	<b>0</b>
Deceased	*	0

AHAR PSH Destination for CoC: OH-501 Toledo/Lucas County CoC

Other living arrangement	0	17
Missing this information	51	6
<b>Other destination subtotal</b>	<b>51</b>	<b>23</b>

\*No data entered or status is not Confirmed and Usable.



### Exit Destination for Individuals in Permanent Supportive Housing

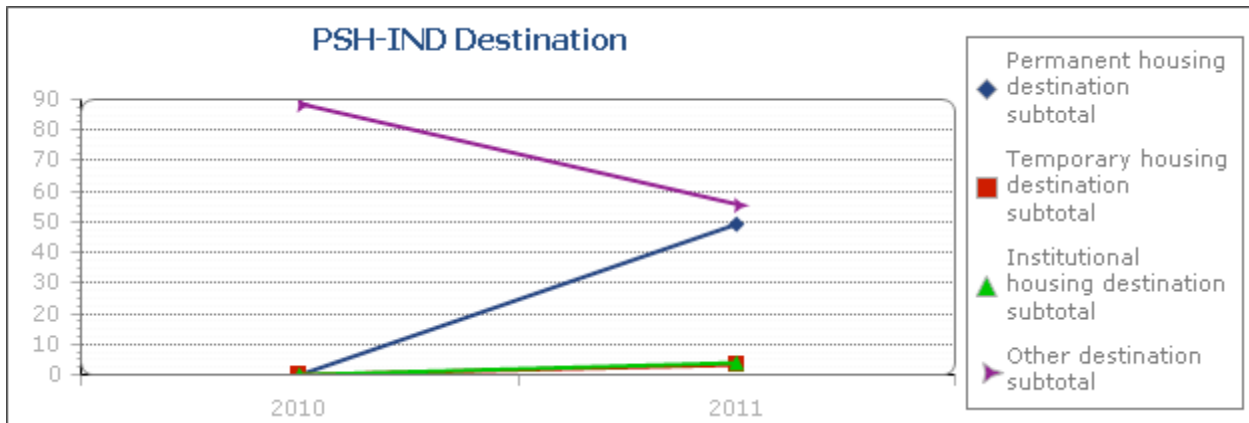
This table includes data about housing destinations of people in households comprised of only adults or only children who exited permanent supportive housing during the AHAR reporting period. Note that prior to 2011, There was no distinction between staying with family/friends permanently or temporarily. All family/friends destinations prior to 2011 are grouped in the temporary category.

Destination	2010	2011
Permanent supportive housing	0	0
Rental by client	0	36
Staying with family/friends (permanent)	*	13
Owned by client	0	0
<b>Permanent housing destination subtotal</b>	<b>0</b>	<b>49</b>
Emergency shelter	0	3
Transitional housing	0	0
Staying with family/friends (temporary)	0	0
Place not meant for habitation	0	0

AHAR PSH Destination for CoC: OH-501 Toledo/Lucas County CoC

Safe Haven	*	0
Hotel or motel (no voucher)	0	0
<b>Temporary housing destination subtotal</b>	<b>0</b>	<b>3</b>
Psychiatric facility	0	1
Substance abuse treatment or detox	0	0
Hospital (non-psychiatric)	0	0
Jail, prison, or juvenile detention	0	3
Foster care home	0	0
<b>Institutional housing destination subtotal</b>	<b>0</b>	<b>4</b>
Deceased	*	0
Other living arrangement	0	49
Missing this information	89	7
<b>Other destination subtotal</b>	<b>89</b>	<b>56</b>

\*No data entered or status is not Confirmed and Usable.



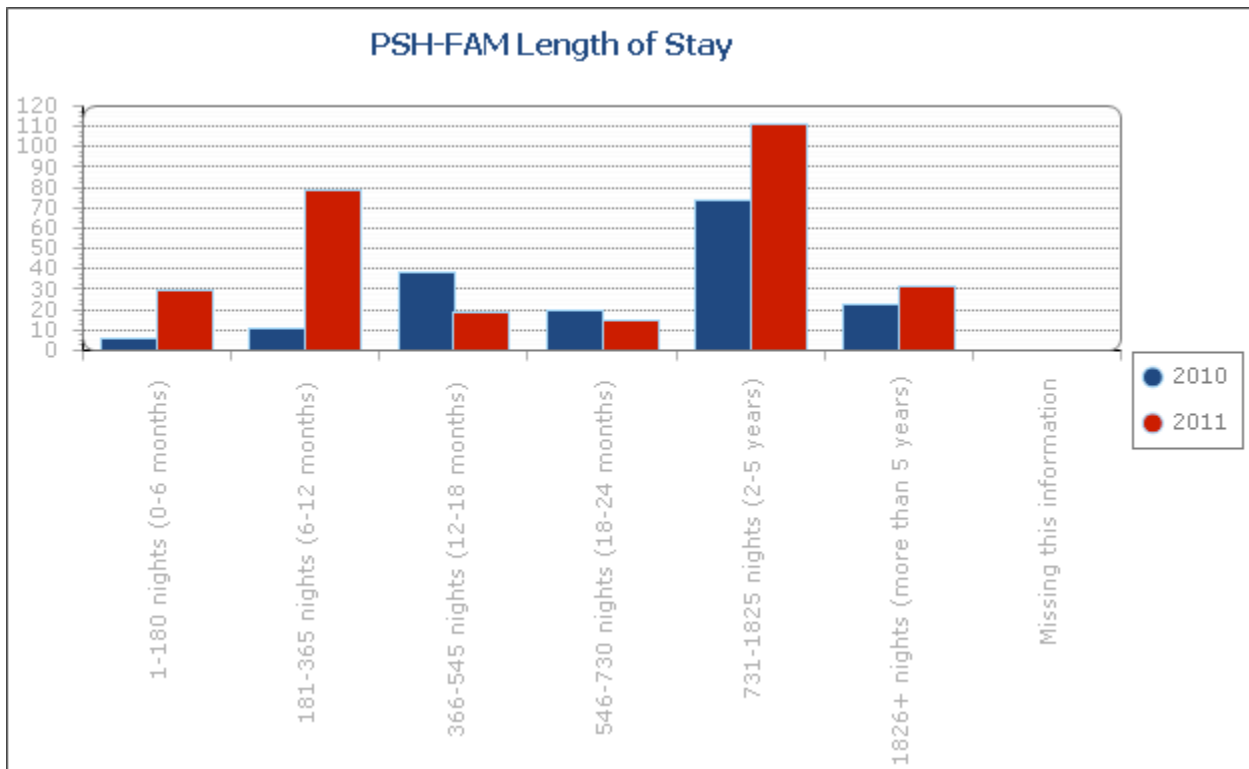


## AHAR PSH Length of Stay CoC: OH-501 Toledo/Lucas County CoC

### Length of Stay for Families in Permanent Supportive Housing

This table includes data about total length of stay in permanent supportive housing for people in households with at least one adult and one child during the AHAR reporting period.

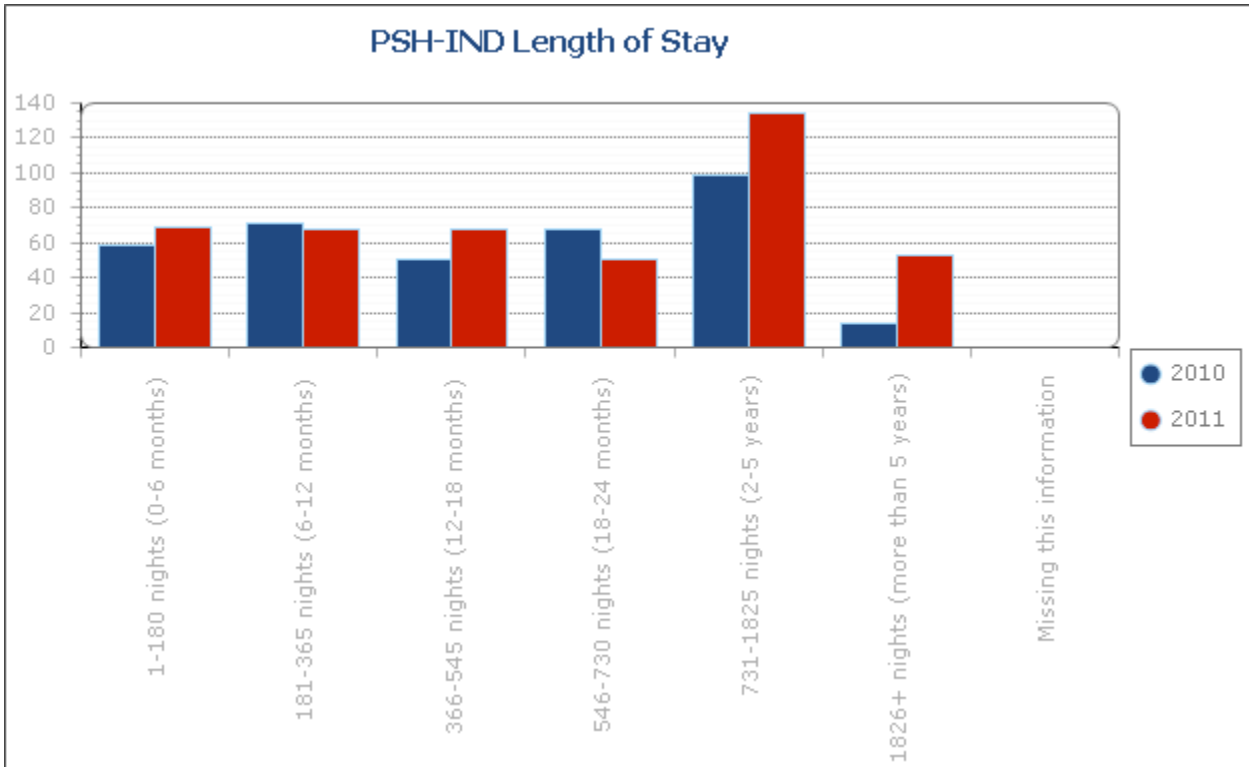
Length of Stay	2010	2011
1-180 nights (0-6 months)	6	30
181-365 nights (6-12 months)	11	79
366-545 nights (12-18 months)	38	19
546-730 nights (18-24 months)	20	15
731-1825 nights (2-5 years)	74	111
1826+ nights (more than 5 years)	23	31
Missing this information	0	0



### Length of Stay for Individuals in Permanent Supportive Housing

This table includes data about total length of stay in permanent supportive housing for people in households comprised of only adults or only children during the AHAR reporting period.

Length of Stay	2010	2011
1-180 nights (0-6 months)	59	69
181-365 nights (6-12 months)	71	68
366-545 nights (12-18 months)	51	68
546-730 nights (18-24 months)	68	51
731-1825 nights (2-5 years)	99	134
1826+ nights (more than 5 years)	14	53
Missing this information	0	0



No Pulse data at this time for CoC: OH-501 Toledo/Lucas County CoC